

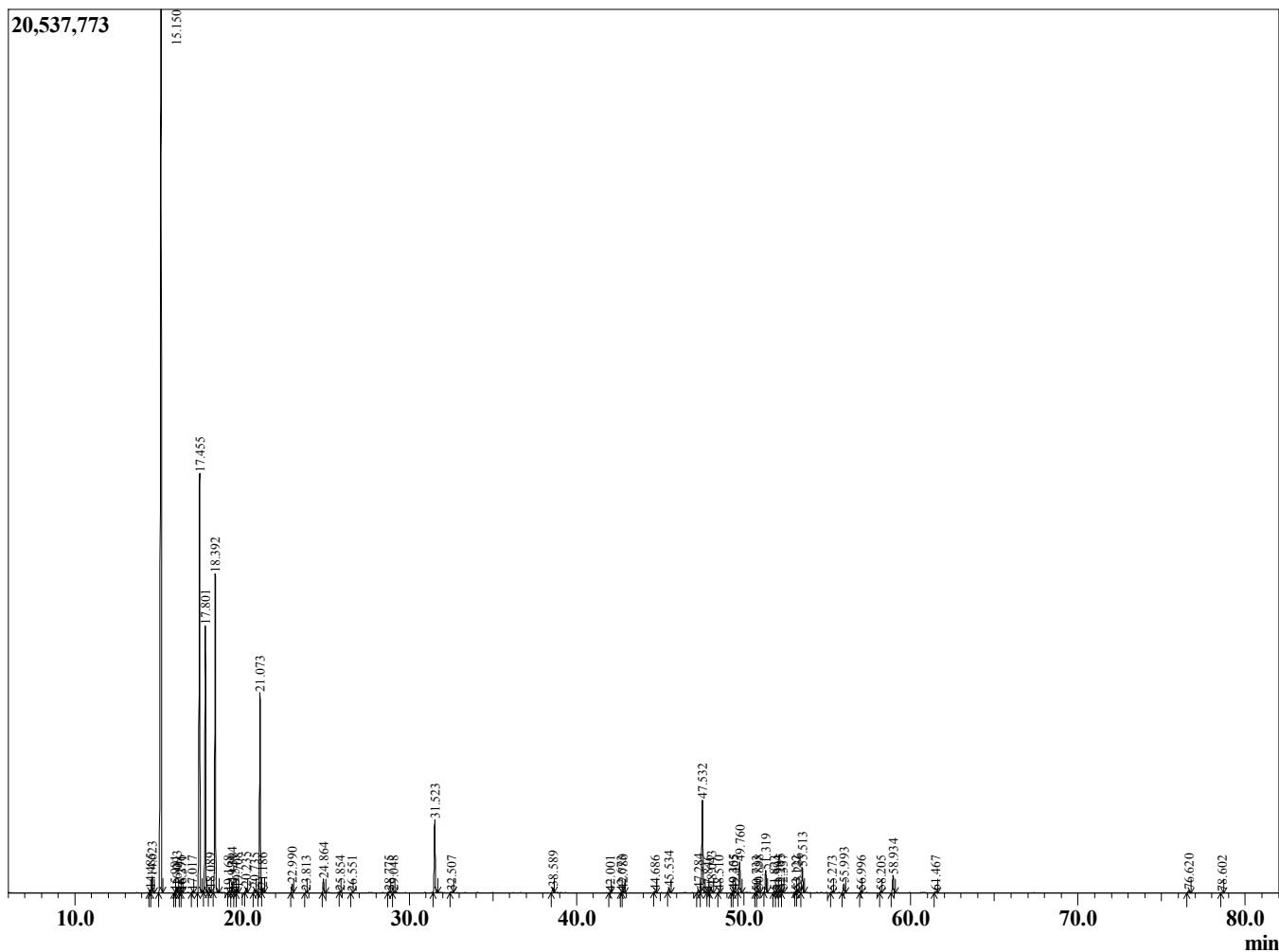
Sample Information

Sample Type : Essential Oil
 Sample Name : Juniperus communis

Juniper Berry
 Lot# RUR15-RW
 Country: Russia



Chromatogram Juniperus communis



R.Time	Name	Area%
14.485	Tricyclene	0.10
14.623	alpha-Thujene	0.51
15.150	alpha-Pinene	38.32
15.981	alpha-Fenchene	0.03
16.093	Camphene	0.20
16.296	Thuja-2,4(10)diene	0.02
16.371	Unidentified	0.03
17.017	Unidentified	0.04
17.455	Sabinene	15.81
17.801	beta-Pinene	9.50
18.089	Camphene isomer	0.14
18.392	Myrcene	11.67
19.168	1-para-Menthene	0.01
19.394	Pseudolimonene	0.35
19.545	alpha-Phellandrene	0.03
19.708	delta-3-Carene	0.14
20.235	alpha-Terpinene	0.18
20.735	para-Cymene	0.16
21.073	Limonene	7.51
21.186	beta-Phellandrene	0.15
22.990	gamma-Terpinene	0.34
23.813	trans-Sabinene hydrate	0.04
24.864	Terpinolene	0.53
25.854	alpha-Pinene oxide	0.02
26.551	Unidentified	0.02
28.775	trans-Pinocarveol	0.05
29.048	trans-Verbenol	0.04
31.523	Terpinen-4-ol	3.07
32.507	alpha-Terpineol	0.05
38.589	Bornyl acetate	0.24
42.001	delta-Elementene	0.02
42.673	alpha-Terpinyl acetate	0.02
42.780	alpha-Cubebene	0.09
44.686	alpha-Copaene	0.05
45.534	beta-Elementene	0.23
47.284	alpha-Cedrene	0.15
47.532	beta-Caryophyllene	4.15
47.846	beta-Cedrene	0.02
48.043	gamma-Elementene	0.24
48.510	cis-Thujopsene	0.04
49.355	Humulene-(v1)	0.07
49.405	trans-beta-Farnesene	0.07
49.760	alpha-Humulene	1.40
50.733	10-beta-H-Cadina-1(6),4-diene	0.03
50.898	trans-Cadina-1(6),4-diene	0.07
51.319	Germacrene D	1.01
51.823	beta-Selinene	0.03
51.994	trans-Muurolo-4(14),5-diene	0.03
52.205	Bicyclogermacrene	0.12
52.337	alpha-Muuroloene	0.07
53.122	alpha-Alaskene	0.02
53.236	gamma-Cadinene	0.11
53.513	delta-Cadinene	1.09
55.273	Elemol	0.05
55.993	Germacrene B	0.41
56.996	Germacren D-4-ol	0.04

R.Time	Name	Area%
58.205	Unidentified	0.05
58.934	Cedrol	0.83
61.467	alpha-Cadinol	0.04
76.620	Myrcene dimer I	0.13
78.602	Myrcene dimer II	0.04
		100.00